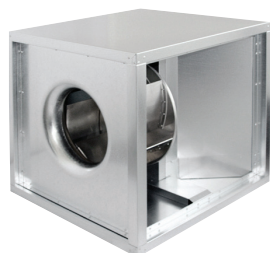


Cabinet Fans

Double skin in-line fans for kitchens



VEKITA SILENCE-O

Advantages

- Motor outside air stream.
- Ideal for kitchens.
- Double skin insulation.
- Aluminium impeller.
- Variable speed control.
- Maintenance-free.

APPLICATION

- Air exhaust / air supply.
- Ideal for kitchens.

DESCRIPTION

- Backward curved centrifugal fan.
- Galvanized steel sheet housing designed to function as a grease pan.
- Aluminium impeller.
- 40 mm insulation, double skin.
- With bottom pan.
- Motor separated from air stream through built-in bulhead.
- Outlet is right-angled to Inlet.
- Long-life ball bearings.
- IP 54.

INSTALLATION

- Horizontal / vertical.
- Suspended ceilings.
- Indoor / outdoor.

RANGE

| Description | Code |
|------------------|------|
| VSO 2300 - 230 V | |
| VSO 3400 - 230 V | |
| VSO 3200 - 230 V | |
| VSO 4700 - 230 V | |
| VSO 6700 - 230 V | |

ELECTRICAL ACCESSORIES

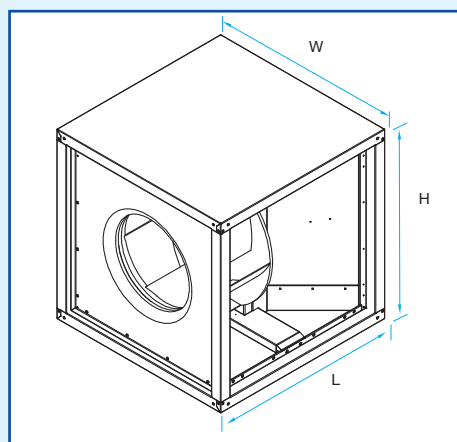
- 1-phase voltage regulator: please, see page 171.
- 1-phase electronic speed controller: please, see page 172.
- 1-phase autotransformer: please, see page 172.

PRE-SELECTION OF TYPE OF VEKITA SILENCE-O

The airflows correspond to a pressure loss of 200 Pa.

| | |
|-----------------------|-------------------------|
| VSO 6700 | 6 700 m ³ /h |
| VSO 4700 | 4 700 m ³ /h |
| VSO 3400 | 3 400 m ³ /h |
| VSO 3200 | 3 200 m ³ /h |
| VSO 2300 | 2 300 m ³ /h |
| Q (m ³ /h) | |

DIMENSIONS - WEIGHT



| Type | L (mm) | W (mm) | H (mm) | Weight (kg) |
|----------|--------|--------|--------|-------------|
| VSO 2300 | 500 | 500 | 500 | 35.5 |
| VSO 3400 | 500 | 500 | 500 | 37.0 |
| VSO 3200 | 700 | 700 | 700 | 58.5 |
| VSO 4700 | 700 | 700 | 700 | 59.5 |
| VSO 6700 | 700 | 700 | 700 | 71.5 |

ELECTRICAL DETAILS

| Type | I (A) | U (V) | f (Hz) | Lwa5 (dB (A)) | P (W) | No. of Poles |
|----------|-------|-------|--------|---------------|-------|--------------|
| VSO 2300 | 3.1 | 230 | 50 | 78 | 660 | 2 |
| VSO 3400 | 4.2 | 230 | 50 | 83 | 960 | 2 |
| VSO 3200 | 3.0 | 230 | 50 | 72 | 570 | 4 |
| VSO 4700 | 4.1 | 230 | 50 | 75 | 870 | 4 |
| VSO 6700 | 5.7 | 230 | 50 | 80 | 1280 | 4 |

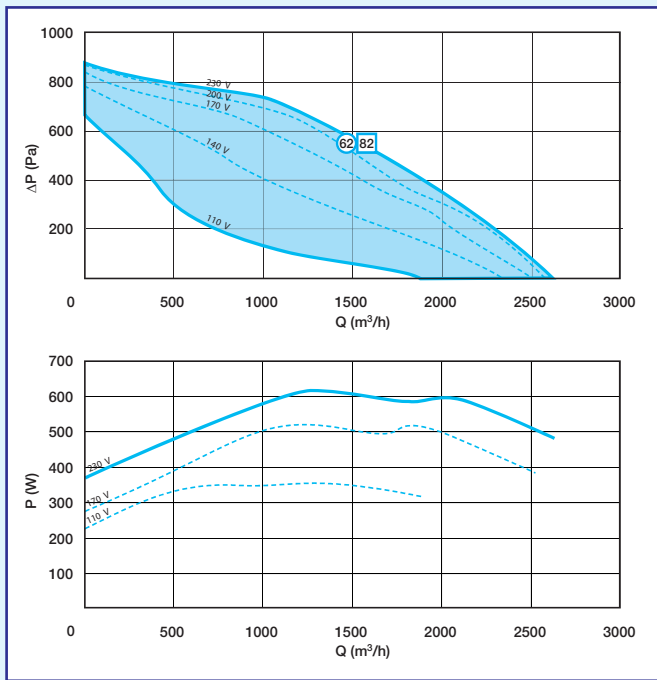
Cabinet Fans

VEKITA SILENCE-O

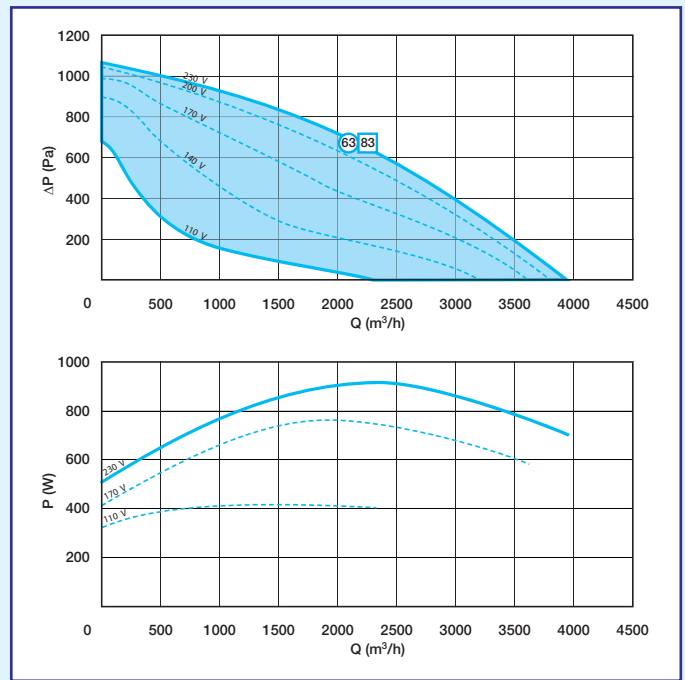
AIRFLOW AND ACOUSTIC DETAILS

- The following airflow curves were drawn up in accordance with Standard EN ISO 5801.
- In Pressure vs. Flow graph, the minimum, maximum and intermediate curves represent the 5-speed for the VEKITA SILENCE-O 2300, 3400, 3200, 4700 and 6700 with the speed controller.
- \circ Lp (dB (A)) = Sound pressure level measured at 4 m from the casing, with fan discharge connected.
- \square Lw (dB (A)) = Sound power level radiated in the duct under suction.
- P (Pa) = Static pressure - P (W) = Maximum power consumption.

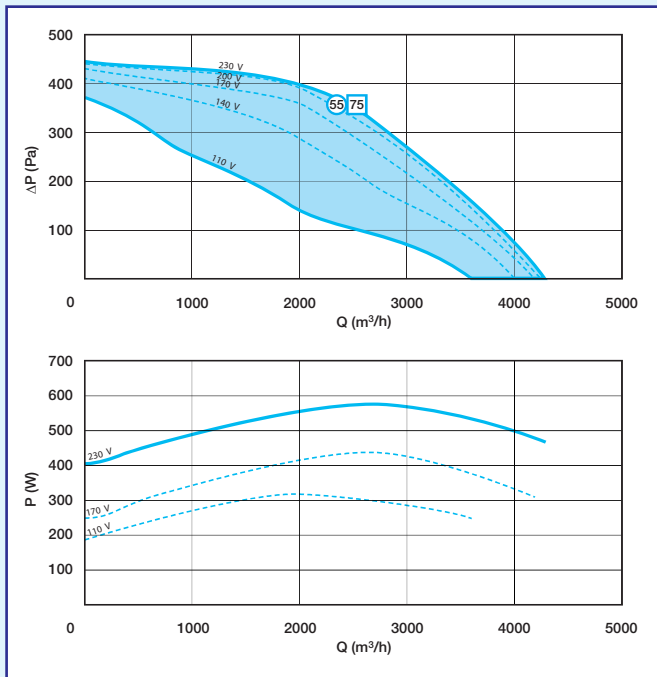
VSO 2300 - 230V



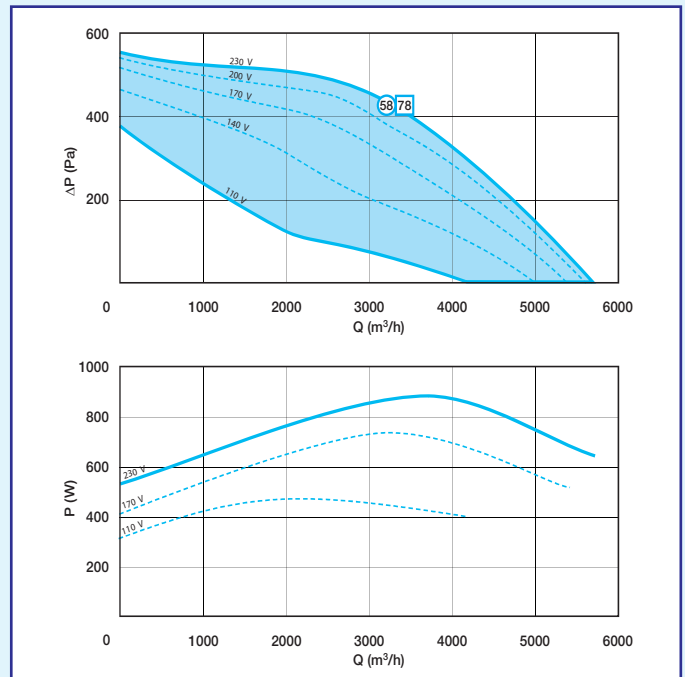
VSO 3400 - 230V



VSO 3200 - 230V



VSO 4700 - 230V



Cabinet Fans

VEKITA SILENCE-O

AIRFLOW AND ACOUSTIC DETAILS

- The following airflow curves were drawn up in accordance with Standard EN ISO 5801.
- In Pressure vs. Flow graph, the minimum, maximum and intermediate curves represent the 5-speed for the VEKITA SILENCE-O 2300, 3400, 3200, 4700 and 6700 with the speed controller.
- ○ Lp (dB (A)) = Sound pressure level measured at 4 m from the casing, with fan discharge connected.
- □ Lw (dB (A)) = Sound power level radiated in the duct under suction.
- P (Pa) = Static pressure - P (W) = Maximum power consumption.

VSO 6700 - 230V

