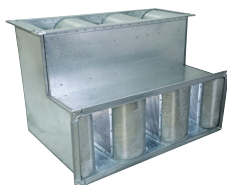


Bend Type Sound Attenuators

Vertical and horizontal bend type sound attenuators



SA 20 V
SA 20 H

APPLICATION

- Bend attenuators can be designed for vertical or horizontal installation to suit the ductwork layout.

DESCRIPTION

- Vertical / horizontal mounting.
- Rectangular cased bend attenuator is mainly used to reduce fan noise to meet the required NC levels.

CONSTRUCTION

- Generally as for the straight version. To minimise resistance to airflow, turning vanes are incorporated into the design.
- The vertical and horizontal mounting cased bend rectangular attenuator mainly used to reduce fan & machine noise to meet the required or allowed noise levels.
- The SA sound attenuators offer many advanced features including standard aerodynamic splitters.
- Erosion protected acoustic infills covered by galvanized perforated sheet.

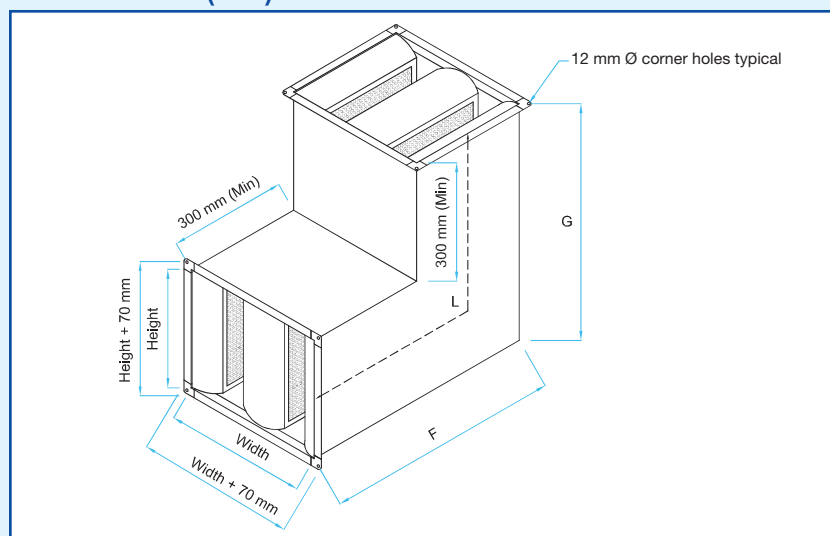
INSTALLATION

- Directly installed on a duct section.
- SA 20 V for vertical installation.
- SA 20 H for horizontal installation.

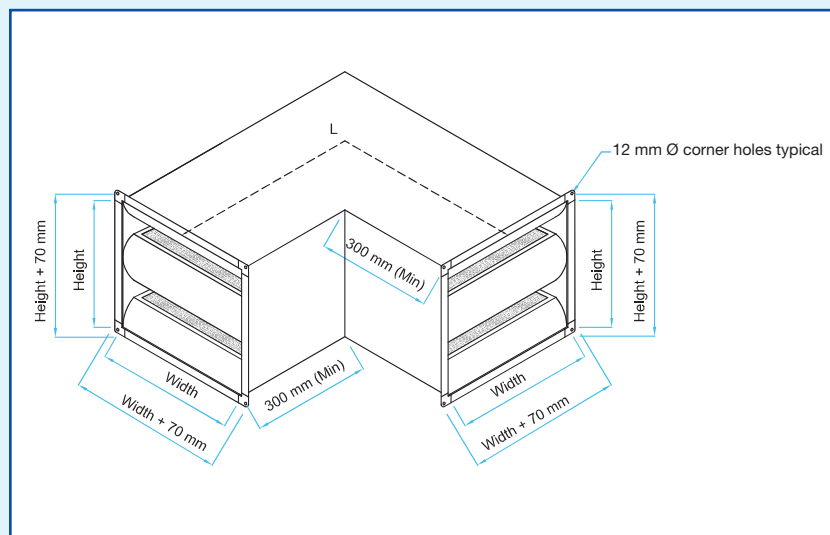
RANGE

Type	Description	Code
SA 20 V	Vertical bend type sound attenuator	
SA 20 H	Horizontal bend type sound attenuator	

DIMENSIONS (mm)



SA 20 V



SA 20 H