

Motorised Smoke & Heat Exhaust Dampers

GFA 007 Grille



With removable core



Compliance

- GFA 007 grille validated by the CTICM-Efectis for installation on VANTONE and VANTONE-M.
- Airflow passage > 91.3%.

Advantages

- Removable core locked by a 1/4 turn screw.
- New filter kit.
- **EXCLUSIVE:** core suspended by the 007 clip for smooth and simple reset!
- Reversible: high or low vanes.
- Aesthetic and aerodynamic vane section.

APPLICATION

- GFA 007 = aesthetic facing grille for VANTONE and VANTONE-M smoke exhaust dampers.
- A grille is compulsory on all smoke exhaust dampers.

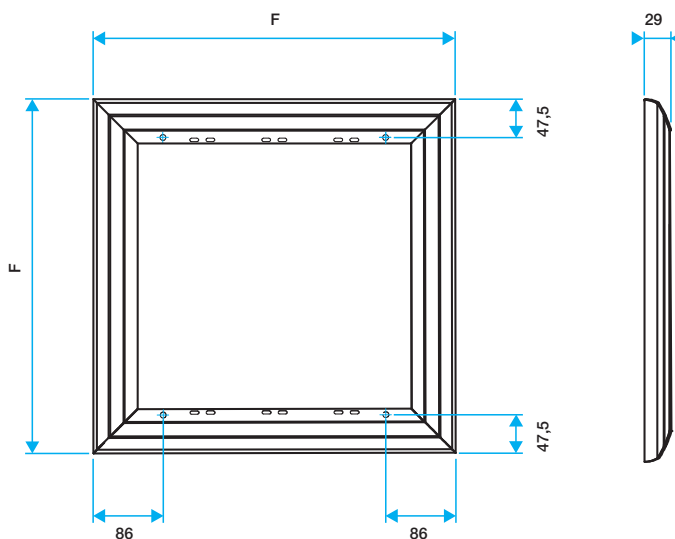
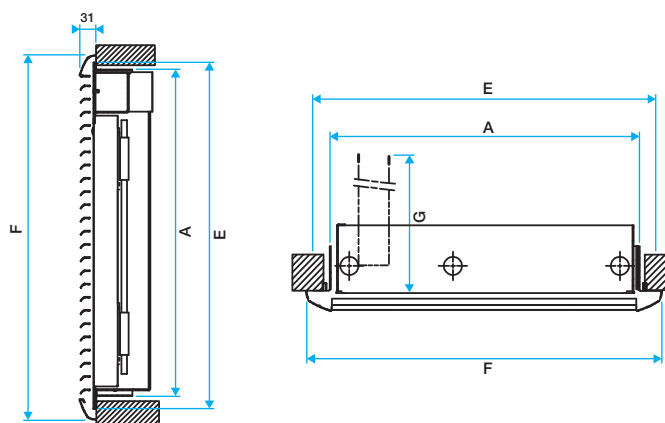
DESCRIPTION

- Comprising a peripheral frame, totally covering the damper.
- The GFA 007 presents a removable core to facilitate reset the damper. This vane core is locked in place by the clever 007 clip, which opens using a flat headed screwdriver or 6x6 Allen key and which is closed manually.
- The 007 clip also allows for hanging the vane core, for just the time needed to reset the smoke exhaust damper, calmly with both hands and without having to step off the stepladder.
- Horizontal aluminium vanes, in steps of 25 mm.
- The aluminium sections used guarantee low airflow pressure losses and answers perfectly to its function as a concealing grille.
- Air passage > 91.3% (allows for calculating the effective passage of air section for mechanical smoke extraction).
- The standard finish is a natural anodised appearance.
- A highly resistant epoxy paint can be requested depending on the RAL colour code required. The paint is not applied to the 007 clip.

007 CLIP

Description	Code
Set of 6 clips 007	11147071

DIMENSIONS (mm)



GFA 007

POSITION

- The grille's frame imposes the location of the 007 clips. Please, consult us:
 - 007 clips on the lower part of a smoke exhaust damper (> 1 m 80 from the ground),
 - 007 clips in the upper part of the air inlet damper (< 1 m from the ground).
- For aesthetic reasons, we recommend a direction of the vane core:
 - place the vanes towards the top for a smoke exhaust damper,
 - place the vanes towards the bottom for a supply air inlet.

FIXING

- GFA 007: fixing to a VANTONE or a VANTONE-M damper supplied after July 2007: products equipped with threaded inserts allowing them to house the GFA 007 grille, thanks to the 4 screws supplied.
- To fix a GFA 007 to a damper prior to July 2007: please, consult us.

Motorised Smoke & Heat Exhaust Dampers

Installation of VANTONE on smoke exhaust ducts

INSTALLATION PRINCIPLE

- VANTONE exhaust damper is either wall mounted, or mounted offset on a duct. The duct is of the smoke exhaust type and can be made from several types of materials:
 - concrete 110 mm wall,
 - sand-lime (Promatect L500 or Supalux M),
 - plaster tiles - 2h fire rating (BPB placo: Standard plaster board 7 + Stucal, LAFARGE: PF3-70 + Pregyfeu M0 BA15),
 - prégyfeu MO BD 25 - 2h fire protection rating (Lafarge),
 - staff 2h fire rating (GEOSTAFF: Staff, EXTHA: Isofiare),
 - vermiculite (Mica) 2h fire rating (cf Distribution: Tecriver).
- Mounting frame described in the Test Reports, recommended to ensure the installation geometry is correct, which itself is necessary for correct functioning of the damper.
- Depending on the type of material, the mounting frame and/or damper can be fixed or embedded. Respect the indications given in the Test Report.

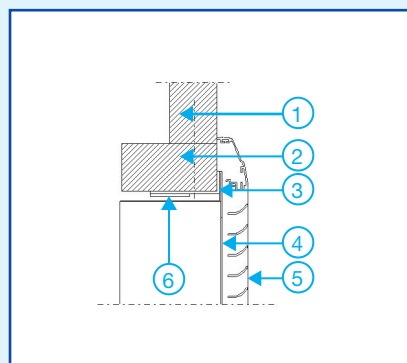
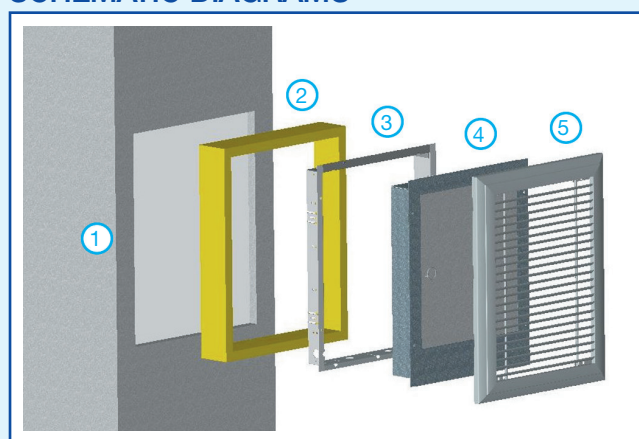
INSTALLATION AND REGULATIONS

- Assembly of the damper on the duct must follow a fire resistance rating Test Report.
- VANTONE dampers have been tested in accordance to CTICM (Effectis) Test Reports, describing:
 - fixing of the VANTONE mounting frame, developed for a professional level installation,
 - precautions to be taken when fitting the VANTONE smoke exhaust damper, especially the fitting of a sleeve or not,
 - application of an intumescent seal on the mounting frame, if necessary.
- For more information, please consult us.

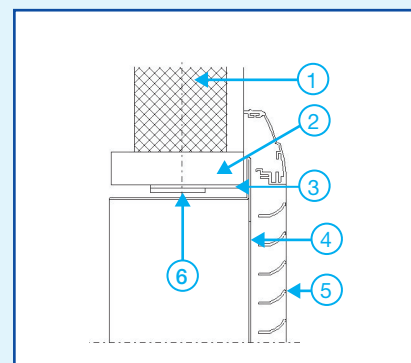
KEY TO DIAGRAMS

- Duct having the benefit of a "vertical smoke exhaust duct" Test Report.
- Sleeve with a minimum depth of 110 mm. To be carried out by the duct supplier.
- VANTONE mounting frame to be fixed to the sleeve.
- VANTONE smoke exhaust damper to be screwed on to the mounting frame ③.
- GFA 007 grille to be fixed to the damper ④, by screws, clips or hinges.
- Self-adhesive intumescent seal to be applied to the mounting frame when the degree of fire resistance is higher than 1.5h or in cases where the partition wall is not M0 or M1 (incombustible or non-flammable).
- Grouting.

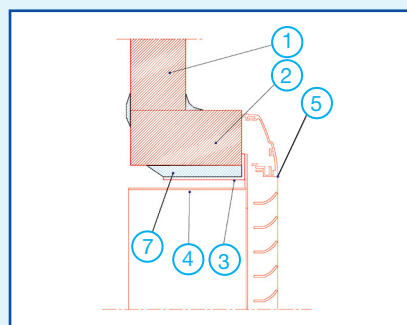
SCHEMATIC DIAGRAMS



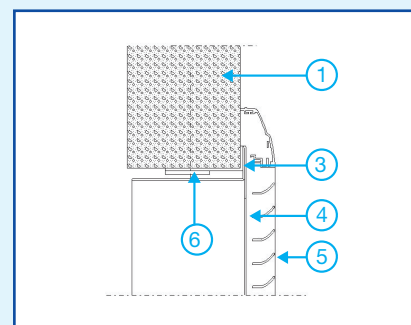
Silicate (PROMAT)



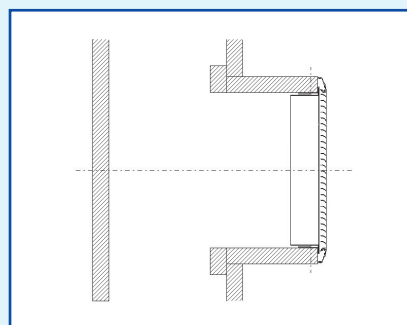
Plaster tiles + board



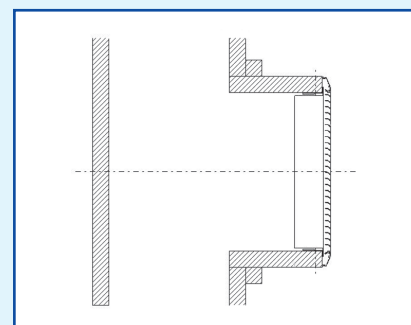
Staff



Concrete



Duct



Duct

INTUMESCENT ROLLS R14

Description	Code
Self-adhesive intumescent seal: L x l x th. = 20 m x 40 mm x 2 mm	11045394