

Motorised Fire Dampers

With thermal responsive device (manually resettable) & spring return actuator



MD 125

CIVIL DEFENCE APPROVED

Compliance

- UL 555 classified.
- Constructed and tested as per latest version of UL 555 standard.

Advantages

- Fire resistance: 1.5h.
- Dynamic rating: 2000 fpm at 4" w.g.
- Installation: Upstream or downstream; Vertical or Horizontal.
- Suitable for static & dynamic systems.
- Easy maintenance due to motorization.

APPLICATION

- Motorised fire dampers are designed to be installed in HVAC ductwork at locations that are designated as fire barrier.
- Suitable for vertical installation in walls/partitions and horizontal installation in floors having a fire resistance rating of less than 3 hours (as per NFPA 90A).
- It prevents the spread of fire inside residential, commercial and industrial buildings.

DESCRIPTION

- Normally open but can be closed through remote signal from Fire Alarm Control Panel / BMS or closed automatically upon detection of heat.
- Protects the integrity of a fire barrier wherever it is penetrated by HVAC ductwork by preventing the spread of fire.

CONSTRUCTION

- Casing: 140mm deep, hat-shaped casing manufactured from 16 ga. (1.5mm) galvanised steel.
- Blade: 3V-groove shaped, single skin blades manufactured from 16 ga. (1.5mm) galvanized steel. Parallel blade operation.
- TRD: Manually resettable Thermal Responsive Device that operates at 165°F (74°C).
- Blade tip seal: No tip seal installed.
- Jamb seal: Stainless steel, spring action type.
- Actuator: UL listed, Spring return, Electric 24VAC / 230VAC, quick opening & closing.
- Jackshaft: 12mm x 12mm square jackshaft to ensure tight grip at the actuator.
- Brass bush: round for spindles and square for jackshaft.
- Linkage: Zinc plated steel external linkage, concealed in frame.
- Sleeve: 400mm long factory installed sleeve (standard supply) manufactured from 16ga (1.5mm) galvanised steel.
- Minimum size: 203mm x 203mm (for ** 150mm x 150mm, see note under Available Sizes table).
- Maximum size: 914mm x 914mm (single section).
- * Larger sizes manufactured in multiple sections.

INSTALLATION

- Jackshaft upstream or jackshaft downstream.
- Vertical in wall/partitions or horizontal in floors.

RANGE

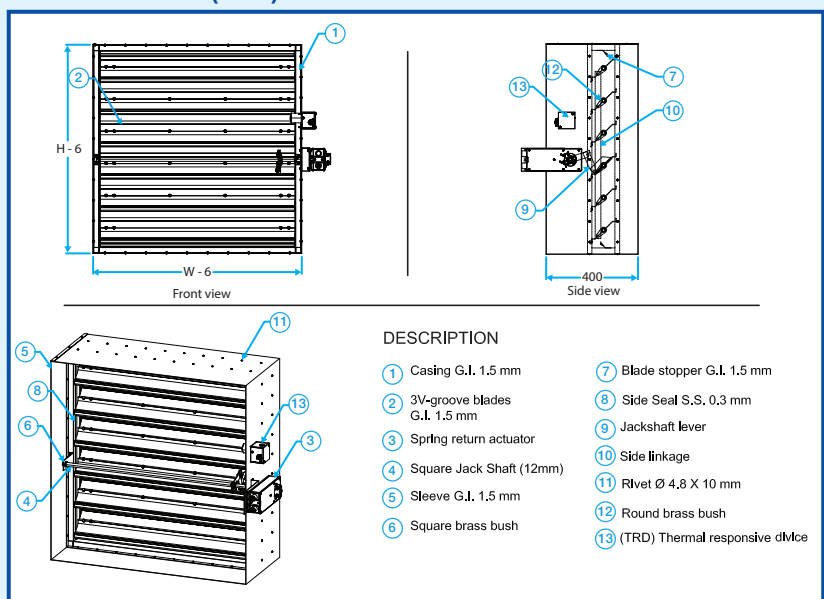
Description	Code
MD 125 - MFD with G.I. casing & blades	
*MD 125-1 - MFD with G.I. casing & SS (grade 304) blades	
*MD 125-2 - MFD with SS (grade 304) casing & blades	

ACCESSORIES

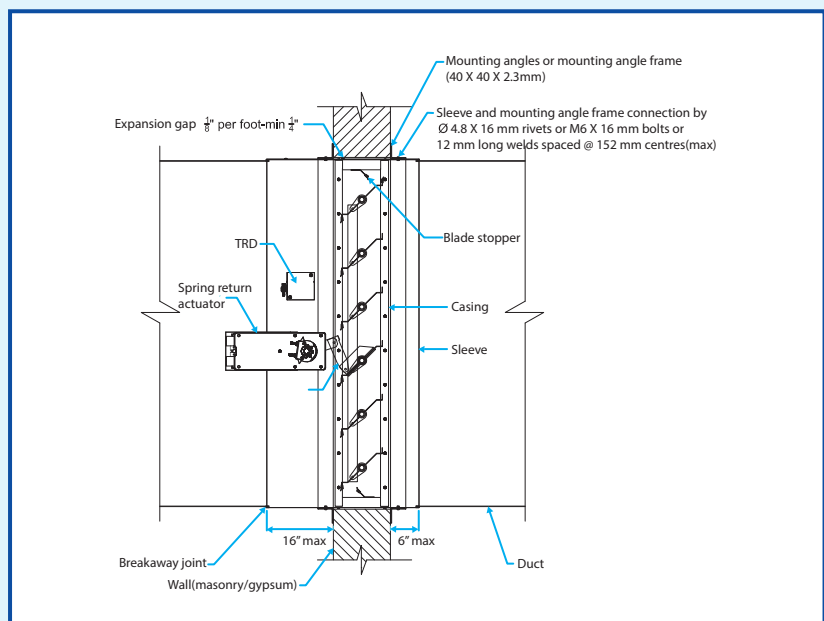
Description	Code
Retaining angles frame – 40 x 40 x 2.3 mm	
Retaining angles lose – 40 x 40 x 2.3 mm	
Duct transitions: rectangular, circular or oval	
Access doors	

*, ** Not available for UL Classified dampers

DIMENSIONS (mm)



INSTALLATION DETAILS



AVAILABLE SIZES (mm)

W	150**	200	250	300	350	400	450	500	550	600	650	700	750	800	850	900
H	150**	200	250	300	350	400	450	500	550	600	650	700	750	800	850	900

** 200W or 200H damper with factory installed sleeve will have rectangular/round/oval duct transition on both sides of sleeve.

• Any combination of W x H. For non-standard sizes, please consult us.