

## Aldes Centralised Vacuum Cleaning System

### Centralised Vacuum Cleaning (CVC) system presentation

Your house has to be regularly **cleaned & cleared from the dust** which accumulates day after day.

The Central Vacuum Cleaning system is:

- One central unit installed in the utility room or garage
- One hose that has to be connected

#### Central Unit

The dust extraction unit is fixed in the garage or utility room.  
No more cylinder vacuum cleaner to carry around!

#### Pipework (white)

A perfectly integrated ductwork into the built construction connects the central unit to the inlets.



#### Handy flexible + handle

The vacuum cleaner is replaced by a simple, light and handy flexible hose, equipped with a smart, ergonomic and easy-to-use handle.

#### Inlets

Aesthetic inlets are discretely installed in different rooms of the house, on the wall, on the floor or into the skirting boards. Could be installed at the same height as a standard electrical switch, and also together with a switch or an electrical socket.

## Advantages of Centralized Vacuum Cleaning system

In comparison with a portable vacuum cleaner, a Centralized Vacuum Cleaning (CVC) system has a lot of advantages:

### → Health & Hygiene with good Indoor Air Quality (IAQ)



The dust particles are efficiently vacuumed and discharged in the dust canister of the cleaner.

Particules are not discharged directly in the living space. The vacuumed rooms are thus totally healthy.

### → Acoustic Comfort

No motor dull sound any more ! It is now possible to vacuum in **peace**.

No disturbance for the people who are in the same room (such as a baby who is sleeping)

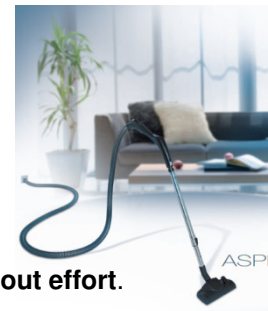
### → Centralised system fully integrated into the villa or mosque ...



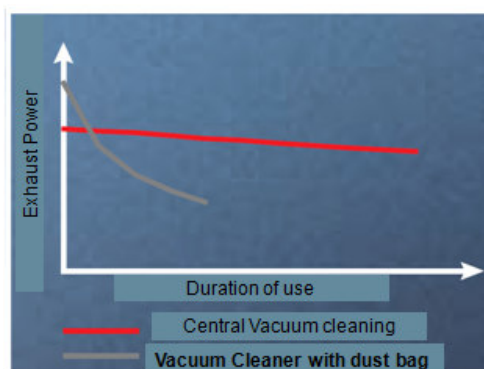
### → Plug & Play + Handiness

No need to handle the vacuum cleaner anymore !

The light hose with 7.5 meter length allows to vacuum in all corners of the house **without effort**.



### → High power with constant efficiency



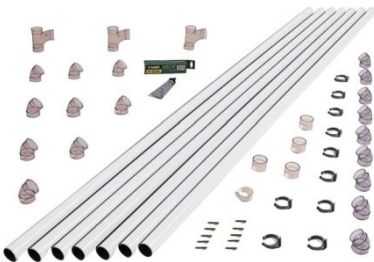
→ Central Unit

C.Power is the **most powerful** vacuum cleaner of Aldes range:

- Power: from 1,400 W to 2,800 W
- Efficiency: from 425 W to 2 x 425 W
- Flow rate: from 210 m<sup>3</sup>/h to 2 x 210 m<sup>3</sup>/h
- Vacuum max: 26kPa
- Sound level: 58dbA
- Size: 410 x 780 x 370 mm
- Weight: 17kg
- Filtration: through a polyester bag high efficiency, with a capacity of 30L (6months to 1 year of vacuuming)
- LCD display: 3 levels at the unit and at the handle; soft start
- Pipe work
- Many useful & innovative accessories available



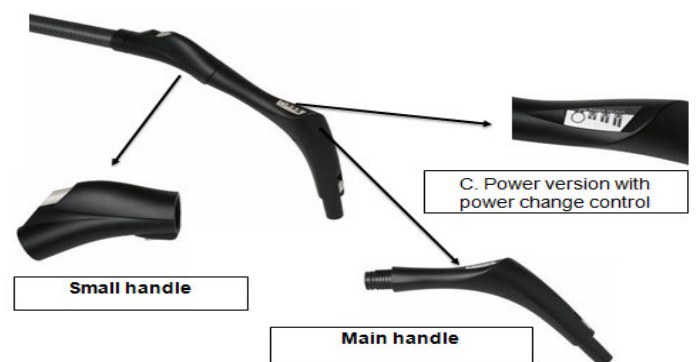
→ Pipework



Aldes proposes T range pipework for its CVC system, which is **fully integrated** in raised floor, slab or wall. Specially designed for CVC pipework (PVC pipes diameter = 51 mm), it is **ideal** for **pre-equipped** a house

This pipework has an efficient dust transportation (dust speed > 110km/h), with low pressure loss in the system.

→ An ergonomic handle (2 in 1)

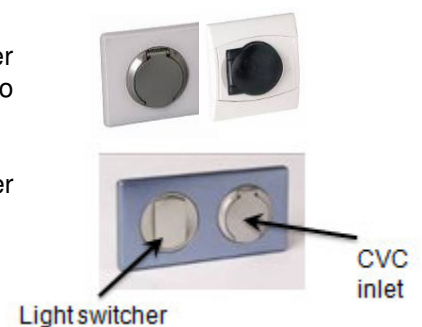


→ CVC inlets

Aldes provides aesthetic inlets, which are basically same as those of other electrical equipments. Its large range of colors and materials allow these inlets to be attractive for private housing as well as for commercial premises.

The mounting of these inlets is very easy as close to the mounting of other electrical equipments, without apparent screws.

The CVC inlet can also be mounted together with a switch or an electrical socket.



→ C.Power has also a wide range of innovative accessories

**Bag for accessories' storage**



**Car cleaning set**



New design combined nozzle



Telescopic wands metal coated



Small Turbo brush



Long flexible crevice nozzle

**Brush**

The brush delivered with every Aldes cleaning set is in the **3 best brushes for each of below tests!**

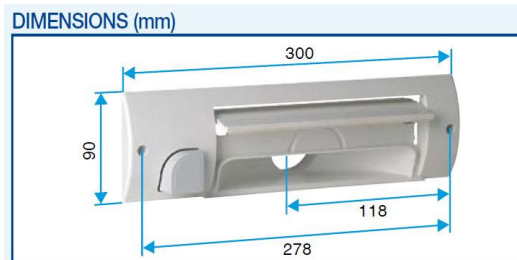
- Moving resistance
- Dust vacuuming in chinks
- Dust vacuuming on hard floor
- Dust vacuuming on carpet



**Dust pan**

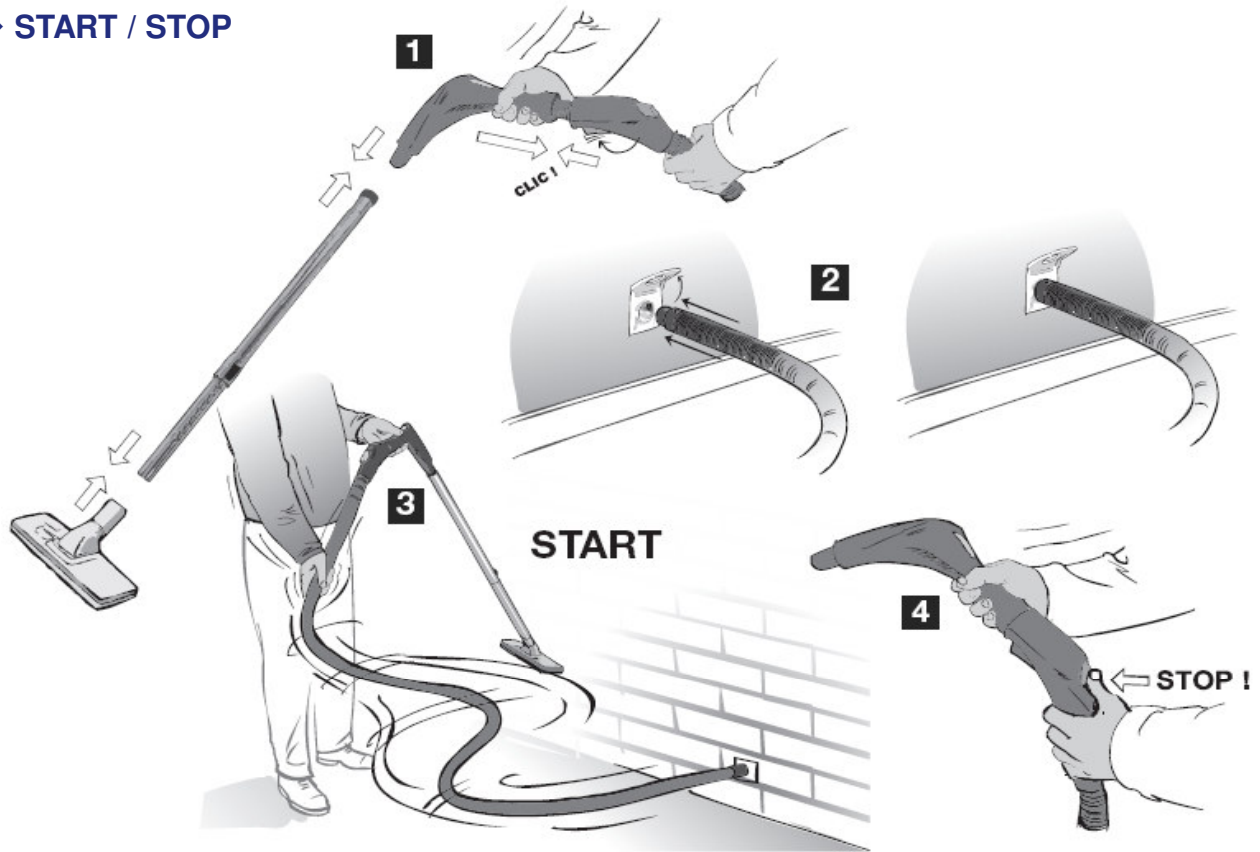
This is the most **convenient** accessory for a kitchen or a bathroom: it easily removes all the dust, crumbs & hair by sweeping towards the dust pan (but not the water).

Only electrical connection to the central unit (no hose connection required).

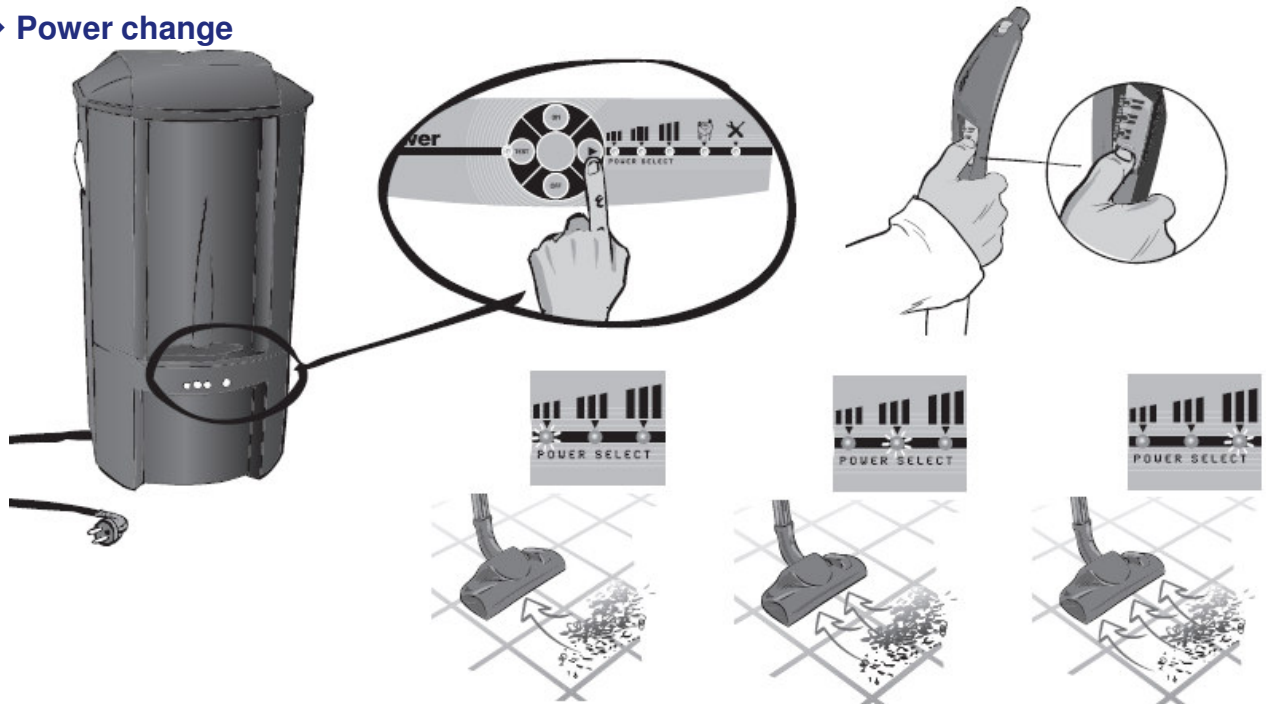


## How does C.Power work?

→ START / STOP



→ Power change



**SOME FIGURES**

- Aldes Group has been manufacturing CVC units since 1989 (more than 20 years of experience).
- Innovative products:
  - High-quality plastic
  - Twin-motor technology with max power 2,200 W
  - Wireless start/stop → Time saving for users
- More than 100000 pieces sold over 20 years
- A lot of prestigious references through the World

If you want to get more information about Aldes CVC system, please ask for our documentations and meet one of our sales people.

[www.aldes.ae](http://www.aldes.ae)

